

DOL TAACCCT Teleconference Summary

Working with the Public Workforce System

April 23, 2014

Peer Presenters:

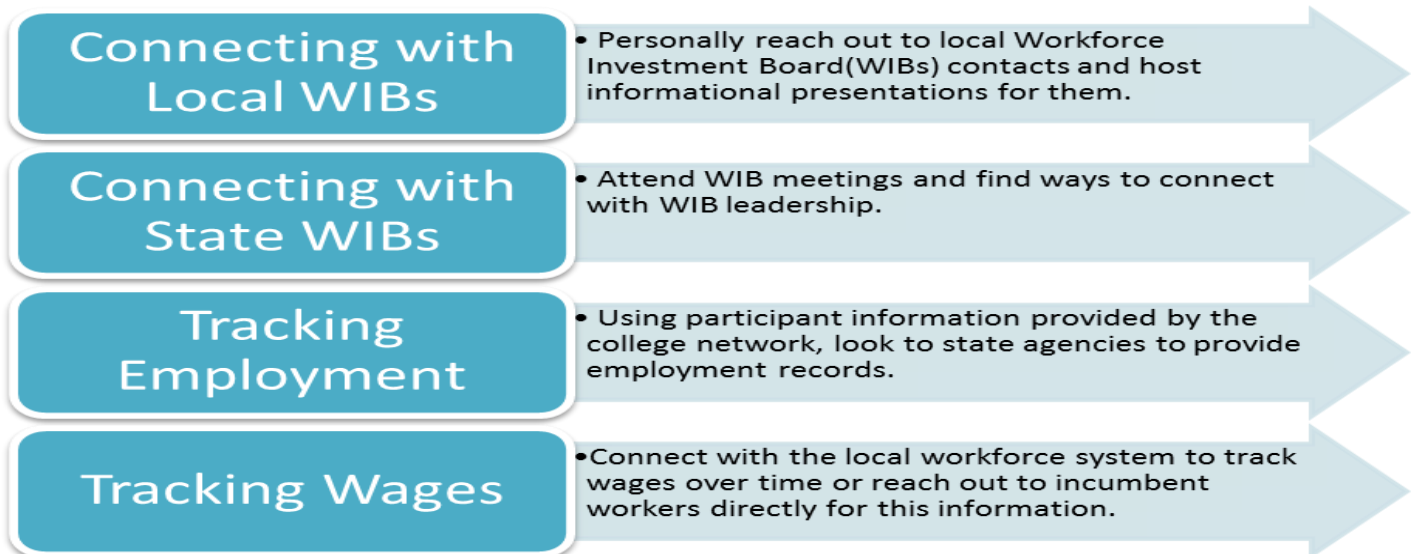
Cynthia Andrews, Oregon CASE Consortium, Clackamas Community College
Scott Jedele, Multi-State Advanced Manufacturing Consortium, Henry Ford Community College
Carol Weigand, Air Washington Project, Spokane Community College

Moderators:

Charlotte Harris, Workforce Analyst, Department of Labor
Annette Summers, President, Giuffrida Associates

This Peer to Peer discussion followed the Working with the Public Workforce System webinar held on April 17, 2014.

Peer Recommendations for Overcoming Common Challenges



Promising Strategies

- ✓ Involve the workforce partners early in the grant's development and implementation to incorporate their ideas and perspectives in the management and planning stages.
- ✓ Consider using grant funds to hire a TAACCCT Navigator or Coach who will be able to dedicate time to facilitating communication and data sharing methods between agencies.
- ✓ Have one point of contact in each sector that will manage sector specific goals and periodically report back to the leadership.

Useful Resources

Multi-State Advanced
Manufacturing Consortium:
Program Overview



Program
Overview

[TAA Contact List](#)

Sample Intergovernmental
Agreement from
Oregon CASE Consortium



CASE IGA